

**Oracle® Hospitality Cruise Shipboard
Property Management System**

ADPI User Guide

Release 8.0

E84857-02

May 2018

Copyright © 2011, 2018, Oracle and/or its affiliates. All rights reserved.

This software and related documentation are provided under a license agreement containing restrictions on use and disclosure and are protected by intellectual property laws. Except as expressly permitted in your license agreement or allowed by law, you may not use, copy, reproduce, translate, broadcast, modify, license, transmit, distribute, exhibit, perform, publish, or display any part, in any form, or by any means. Reverse engineering, disassembly, or decompilation of this software, unless required by law for interoperability, is prohibited.

The information contained herein is subject to change without notice and is not warranted to be error-free. If you find any errors, please report them to us in writing.

If this software or related documentation is delivered to the U.S. Government or anyone licensing it on behalf of the U.S. Government, then the following notice is applicable:

U.S. GOVERNMENT END USERS: Oracle programs, including any operating system, integrated software, any programs installed on the hardware, and/or documentation, delivered to U.S. Government end users are "commercial computer software" pursuant to the applicable Federal Acquisition Regulation and agency-specific supplemental regulations. As such, use, duplication, disclosure, modification, and adaptation of the programs, including any operating system, integrated software, any programs installed on the hardware, and/or documentation, shall be subject to license terms and license restrictions applicable to the programs. No other rights are granted to the U.S. Government.

This software or hardware is developed for general use in a variety of information management applications. It is not developed or intended for use in any inherently dangerous applications, including applications that may create a risk of personal injury. If you use this software or hardware in dangerous applications, then you shall be responsible to take all appropriate fail-safe, backup, redundancy, and other measures to ensure its safe use. Oracle Corporation and its affiliates disclaim any liability for any damages caused by use of this software or hardware in dangerous applications.

Oracle and Java are registered trademarks of Oracle and/or its affiliates. Other names may be trademarks of their respective owners.

Intel and Intel Xeon are trademarks or registered trademarks of Intel Corporation. All SPARC trademarks are used under license and are trademarks or registered trademarks of SPARC International, Inc. AMD, Opteron, the AMD logo, and the AMD Opteron logo are trademarks or registered trademarks of Advanced Micro Devices. UNIX is a registered trademark of The Open Group.

This software or hardware and documentation may provide access to or information on content, products, and services from third parties. Oracle Corporation and its affiliates are not responsible for and expressly disclaim all warranties of any kind with respect to third-party content, products, and services. Oracle Corporation and its affiliates will not be responsible for any loss, costs, or damages incurred due to your access to or use of third-party content, products, or services.

Contents

Tables	4
Figures	5
Preface	6
Audience	6
Customer Support.....	6
Documentation	6
Revision History.....	6
1 System Parameter	7
PAR_GROUP: Interface	7
2 User Interface	8
3 ADPI Configuration	9
Setting up Daily Data Purge.....	13
Setting up Cruise End Data Purge.....	13

Tables

Table 1-1: PAR Group Interface	7
Table 3-1: Daily Data Purge function	9
Table 3-2: ADPI Cruise End Data Purge Setting.....	14

Figures

Figure 3-1 - ADPI Daily Data Purge Settings9
Figure 3-2 - Cruise End Data Purge 13

Preface

The Asynchronous Data Processing Interface (ADPI) is an automated function within Oracle Hospitality Cruise Shipboard Property Management System (SPMS) that purges past data to make way for newer data based on x days specified by user.

The interface program processes asynchronously long running, low priority tasks on a separate computer, preferably on a server where it executes its tasks. The data cleaning procedure is initiated by a command triggered from the night audit computer after system date change completes, and is based on the task frequency set up during installation.

Audience

This document is intended for Ship's System Administrator and/or Application Specialist of Oracle Hospitality Cruise Shipboard Property Management System.

Customer Support

To contact Oracle Customer Support, access My Oracle Support at the following URL: <https://support.oracle.com>

When contacting Customer Support, please provide the following:

- Product version and program/module name
- Functional and technical description of the problem (include business impact)
- Detailed step-by-step instructions to re-create
- Exact error message received
- Screen shots of each step you take

Documentation

Oracle Hospitality product documentation is available on the Oracle Help Center at <http://docs.oracle.com/en/industries/hospitality/>

Revision History

Date	Description of Change
March 2017	<ul style="list-style-type: none">▪ Initial publication.
April 2017	<ul style="list-style-type: none">▪ Minor change to formatting
May 2018	<ul style="list-style-type: none">▪ Removed Log SQL feature

1 System Parameter

The following parameter must be setup in Administration, System Setup, Database Parameter before running the ADPI Interface.

PAR_GROUP: Interface

Table 1-1: PAR Group Interface

PAR Name	PAR Value	Description
ADPI Server Name	Server Name defined by user	Specify the computer name or IP address of the machine where ADPI is running.

2 User Interface

The application purges data older than the days indicated in each of the purge group. You should develop an adequate backup method that let you restore and access old data that is already purged, when required. Once the data is purged, they are not recoverable.

The ADPI application is comprised of three tabs:

- Messages: Tab provides an overview of all messages coming from and being send to SPMS, including the data processing messages.
- Debug: Tab enable detail view of selected messages use for debugging purposes. Each message is logged into a file named "ADPILog_02072009.txt" and saved in the same folder as the application.
- Settings: Tab provides installers and users the options to define the data to keep or purge.

During the setup, the system prompts for login name and password each time the **Apply** button is clicked, in order to save the settings to OHCSettings.par file. Only changes made by Administrative group user is accepted.

Clicking the **Process Now** sets off the data purge based on the settings defined.

WARNING: Purged Data is not recoverable.

Additionally, a blinking 'green light' indicates that ADPI is operational and not processing while blinking a 'yellow light' indicates that the interface is currently processing commands.

3 ADPI Configuration

This section describes the steps in defining the parameters in ADPI interface according to the Ship’s operation. The number of days specified is the days data is retained before being purge.

Note: Some of the functions correlate to one another field. Do ensure the correct check box is checked before applying the change.

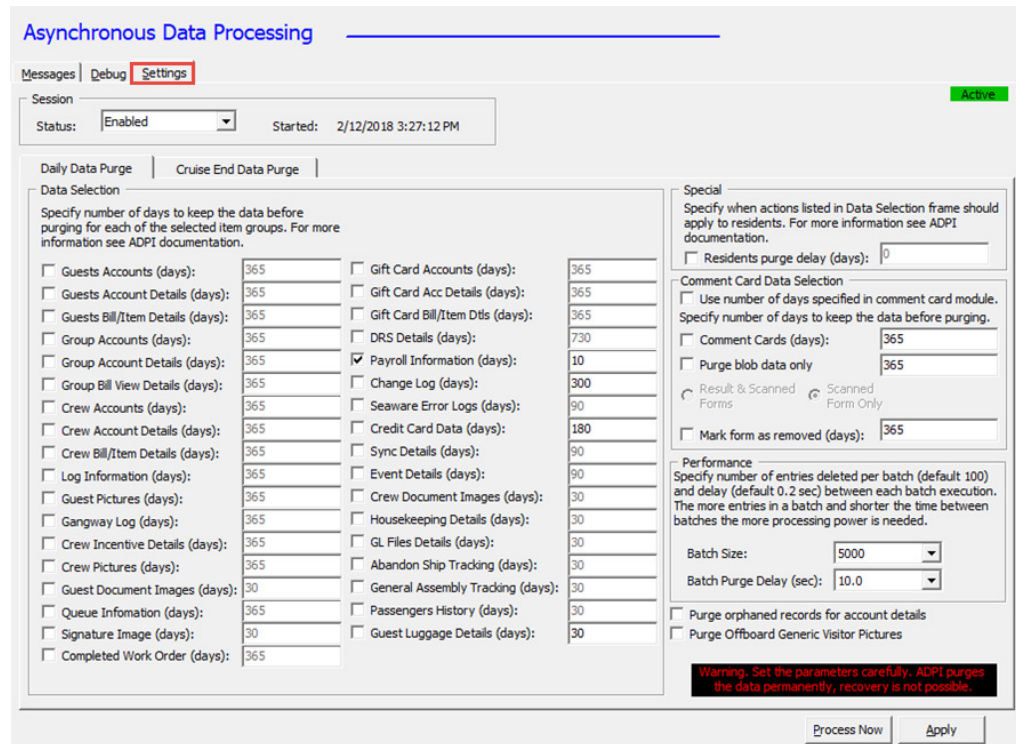


Figure 3-1 - ADPI Daily Data Purge Settings

The Interface has two type of purges:

- Daily Data Purge:** This purge executes daily when ADPI interface receives ‘EndOfDay’ command from Management application after system date change. ADPI only purges one day data that is specific number of days old.
- Cruise End Data Purge:** This purge execute during End of Cruise when APDI Interface receives ‘EndofCruise’ command from Management application.

Below are the available options and its description.

Table 3-1: Daily Data Purge function

Function	Description
Guest Accounts	Purges the postings and user-defined fields for all guests that checked-out, and reservation cancellation specific number of days ago.

Function	Description
Guest Account Details	Purges the excursion and excursion waitlist, pre-postings and billing info, amenities and special requests, visa and flights, reservation history, guest history, travel agent info, allergies info, promotion history, credit card info, authorization, settlement info and guest comment for guests that checked-out specific number of days ago, number of days cannot be greater than the one set for Guest Accounts.
Guest Bill/Item Details	Purges the bill view, Point-of-Sale (POS) detail item, XML guest history and Dining Reservation System (DRS) item for all guest accounts bill view details for a specific number of days ago, number of days cannot be greater than the one set for Guest Accounts.
Group Accounts	Purges the regular postings and user-defined fields for all groups that checked-out and reservation cancellation specific number of days ago.
Group Account Details	Purges the billing info, travel agent info, credit card info, authorization and settlement info for groups that checked-out specific number of days ago, number of days can not be greater than the one set for Group Accounts.
Group Bill View Details	Purges the bill view and POS detail item for all group accounts bill view details for a specific number of days ago, number of days cannot be greater than the one set for Group Accounts.
Crew Accounts	Purges the regular postings, user defined fields, crew history info and hotel and bar service charge info that checked-out and reservation cancellation specific number of days ago.
Crew Account Details	Purges the pre-postings, visa info, uniform, training and courses, shore side deny info, crew history and promotion history, cabin change log, warning, allergies info, credit card info, authorization, settlement info, time and attendance info, scheduled crew drill training info and crew comment for crew that checked-out specific number of days ago, number of days cannot be greater than the one set for Crew Accounts.
Crew Bill/Item Details	Purges the bill view and POS detail item for all crew accounts bill view details for a specific number of days ago, number of days cannot be greater than the one set for Crew Accounts.
Log Information	Purges Log entries that was logged specific number of days ago.
Guest Pictures	Purges all checked-out and cancelled guest accounts picture details that were entered specific number of days ago.
Gangway Log	Purges Gangway log entries that were entered specific number of days ago.

Function	Description
Crew Incentive Details	Purges Crew incentive entries that were entered specified number of days ago.
Crew Pictures	Purges all checked-out and cancelled crew accounts picture details that were entered specific number of days ago.
Guest Document Images	Purges all checked-out and cancelled guest document image that were entered specific number of days ago.
Queue Information	Purges Guests queue details that were entered specified number of days ago.
Signature Image	Purges all guest/crew checked-out and cancelled accounts signature image that were entered specific number of days ago.
Completed Work Order	Purges the completed maintenance work order and the associated image file that were entered specific number of days ago.
Gift Card Accounts	Purges the regular postings for all gift card accounts that checked-out and reservation cancellation specific number of days ago.
Gift Card Acc Details	Purges the excursion and excursion waitlist, pre-postings and billing info, amenities and special requests, visa and flights, reservation history and guest history, travel agent info, allergies info, promotion history, credit card info, authorization and settlement info for all gift card accounts that checked-out specific number of days ago, number of days cannot be greater than the one set for Gift Card Accounts.
Gift Card Bill/Item Dtls	Purges the bill view and POS detail item for all gift card accounts bill view details for a specific number of days ago, number of days cannot be greater than the one set for Gift Card Accounts.
DRS Details	Purges the DRS posting details that were entered specific number of days ago.
Payroll Information	Purges the contract, pay details, contract details and pay sheet information for all crew accounts payroll details for a specific number of days ago.
Change Log	Purges change, deletion, insertion of audit trail log entries that were entered specific number of days ago. Purges the errors or warnings that return from Seaware that were entered specific number of days ago.
Seaware Error Logs	Purges the errors or warnings that return from Seaware that were entered specific number of days ago.
Credit Card Data	Purges the orphaned credit card data, authorization and settlement that were entered specific number of days ago.

Function	Description
Sync Details	Purges the completed sync data to Seaware that were entered specific number of days ago.
Event Details	Purges event booking, item booking and group booking details that were entered specific number of days ago.
Crew Document Images	Purges all checked-out and cancelled crew document image that were entered specific number of days ago.
Housekeeping Details	Purges housekeeping task assignment that were entered specific number of days ago.
GL Files Details	Purges all generated General Ledger (GL) files that were entered specific number of days ago.
Abandon Ship Tracking	Purges all records in Abandon Ship Tracking that were entered specific number of days ago.
General Assembly Tracking	Purges all records in General Assembly Tracking that were entered specific number of days ago.
Passenger History	Purges all Passenger History records that were entered specific number of days ago.
Special Section	
Residents purge delay	Include all in one resident accounts and details purging that have the same purging accounts and details as Guest Accounts, Guest Account Details and Guest Bill/Item Details.
Comment Card Data Selection	
Use Number of days specified in comment card module.	Define whether to use the Purges parameter defined in Comment Card module.
Comment Cards	Purges the comment card scanned forms and scanned results for comment card details that were entered specified number of days ago.
Purge blob data only	Purges the comment card scanned forms and scanned results blob files) for comment card blob files that were entered specified number of days ago. There is an option to Purges blob data for scanned form only or both.
Mark form as removed	Mark comment card scanned forms as removed for forms that were entered specified number of days ago.
Performance	
Batch Size	Purges the number of entries to delete per batch. Default number of record is 100.
Batch Purge Delay (sec)	Define the execution time to delay between each batch. Default delay time is 0.2 seconds.
Others	
Purge orphaned records for account details	Allows all orphaned entries purging for guest, crew, group, resident and gift card account details.

Function	Description
Purge sync transactions	Purges synchronize transaction records that were entered specified number of days ago which has status as successful or failed.
Purge Offboard Generic visitor pictures	Allow to Purges generic visitor pictures and document images when visitor status = shore side.
Log SQL Statement	Enable log of data Purges when check. System stores files name 'ADPILog_yyyymmdd.txt' in Oracle Hospitality Cruise folder.

Setting up Daily Data Purge

1. From the Interface PC, launch ADPI if the program is not running in the background.
2. Navigate to **Settings** tab, and then select **Daily Data Purge**.
3. Under the Data Selection section, check the desire check box and modify the days accordingly. The default days to keep the data is **0**.
4. Click **Apply** at the bottom right of the screen and re-login when prompt.

The system prompts a login screen as a confirmation before the changes takes place. Login with a user that has permission to change the selection. Program only accept changes made by user from Administrator Group.

Setting up Cruise End Data Purge

The Data purge will execute during end of cruise when ADPI interface receives an 'EndOfCruise' command from Management application. The Cruise End Data purge options are as below.

Figure 3-2 - Cruise End Data Purge

Table 3-2: ADPI Cruise End Data Purge Setting

Function Name	Description
Routing Instructions	Purge all checked-out guests, crew and groups routing instructions details.
Discounts	Purge all checked-out guests, crew and groups discounts details.
Package Plans	Purge Package plan details of the cruise.
Sys Acc Bill/Item Details	Purge system account sales check and posting details item.
Residents purge delay	Purge consist of three types of purging, and they are pictures for checked out and reservation cancellation residents, routing instructions for checked-out residents and discounts for checked-out residents.

1. From the Interface PC, launch **ADPI** if the program is not running at the background.
2. Navigate to **Settings** tab, and then select **Cruise End Data Purge**.
3. Repeat steps 4 – 5 of the above.

The system prompts a login screen as a confirmation before any changes takes place. Login with a user that has permission to change the selection. The program only accept changes made by user from Administrator Group.